

Arp3 Antibody
Rabbit mAb
Catalog # AP91694**Specification**

Arp3 Antibody - Product Information

Application	WB, IHC, FC, ICC
Primary Accession	P61158
Reactivity	Rat
Clonality	Monoclonal
Other Names	
Actin like protein 3; Actin related protein 3; ACTR3;	

Isotype	Rabbit IgG
Host	Rabbit
Calculated MW	47371 Da

Arp3 Antibody - Additional Information

Dilution	WB~~1:1000 IHC~~1:100~500 FC~~1:10~50 ICC~~N/A
Purification	Affinity-chromatography
Immunogen	A synthesized peptide derived from human Arp3
Description	The Arp2/3 complex involved in Golgi polarization in NIH3T3 cells. In a different model it has been shown that the Arp2/3 complex is necessary for neutrophil chemotaxis and phagocytosis.
Storage Condition and Buffer	Rabbit IgG in phosphate buffered saline , pH 7.4, 150mM NaCl, 0.02% sodium azide and 50% glycerol. Store at +4°C short term. Store at -20°C long term. Avoid freeze / thaw cycle.

Arp3 Antibody - Protein Information**Name** ACTR3**Synonyms** ARP3**Function**

ATP-binding component of the Arp2/3 complex, a multiprotein complex that mediates actin polymerization upon stimulation by nucleation-promoting factor (NPF) (PubMed:9000076). The Arp2/3 complex mediates the formation of branched actin networks in the cytoplasm, providing the force for cell motility (PubMed:9000076).

target="_blank">9000076). Seems to contact the pointed end of the daughter actin filament (PubMed:9000076). In podocytes, required for the formation of lamellipodia downstream of AVIL and PLCE1 regulation (PubMed:29058690). In addition to its role in the cytoplasmic cytoskeleton, the Arp2/3 complex also promotes actin polymerization in the nucleus, thereby regulating gene transcription and repair of damaged DNA (PubMed:17220302, PubMed:29925947). The Arp2/3 complex promotes homologous recombination (HR) repair in response to DNA damage by promoting nuclear actin polymerization, leading to drive motility of double-strand breaks (DSBs) (PubMed:29925947). Plays a role in ciliogenesis (PubMed:20393563).

Cellular Location

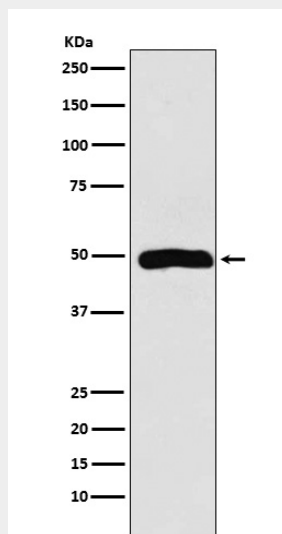
Cytoplasm, cytoskeleton. Cell projection. Nucleus. Note=In pre- apoptotic cells, colocalizes with MEFV in large specks (pyroptosomes) (PubMed:19109554)

Arp3 Antibody - Protocols

Provided below are standard protocols that you may find useful for product applications.

- [Western Blot](#)
- [Blocking Peptides](#)
- [Dot Blot](#)
- [Immunohistochemistry](#)
- [Immunofluorescence](#)
- [Immunoprecipitation](#)
- [Flow Cytometry](#)
- [Cell Culture](#)

Arp3 Antibody - Images



Western blot analysis of Arp3 expression in Jurkat cell lysate.